



# FLOWlines



Finger Lakes-Ontario Watershed Paddlers' Club Newsletter  
Rochester NY

Volume 7, Issue 3

March 2002

## March Steering Meeting

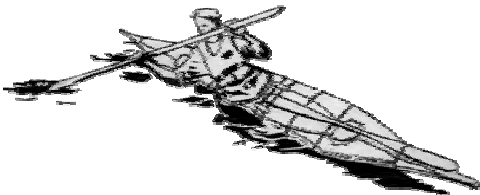
Date: Thursday, March 7  
Time: 7:00 P.M.  
Place: The Cafe at Barnes & Noble Bookstore  
Pittsford Plaza, 3349 Monroe Avenue

Steering committee meetings are open to all members. Feel free to just show up - your input is welcome. If you are not available but have an idea, send email to [president@flowpaddlers.org](mailto:president@flowpaddlers.org).

## March General Meeting

Date: Thursday, March 14  
Time: 7:00 PM  
Place: 141-149 Elmwood Avenue  
*Genesee Water Center Open House*

The presentation will include an overview of GWC's rowing, outrigger canoe, sprint kayak, and canoe and kayak rental programs; a tour of the facility and history of the area. GWC is an exciting place, with a lot to offer the community. Come and take a look! And if you have questions about the potential FLOW/GWC merger, come and ask!



## FLOW Pool Practice Schedule

Admission to pool practice is \$2 for FLOW members and \$5 for the general public.

**Boats Must Be Clean!**

Place	Pittsford Middle School 75 Barker Road, Pittsford
Time	Wednesdays, 7:30 - 9:30 PM
Dates	March 6, 13, 20, 27 April 3, 10

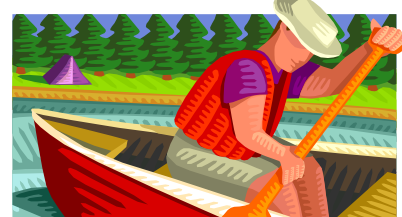
Place	Wheatland-Chili High School Corner of North Rd. and Rt. 386, Scottsville
Time	Mondays, 7:00 - 9:00 PM
Dates	March 4, 11, 18, 25 April 1

## Citizens are getting their feet wet with the Community Water Watch Program!

*Submitted by Margit Brazda,  
Director of the Water Education Collaborative*

The Community Water Watch (CWW) Program is a volunteer-based stream monitoring program, where citizens form "stream teams" that monitor a stream four times a year and report data to the Monroe County Health Department. Volunteers attend introductory and intermediate training sessions in order to learn how to monitor water for physical, biological, and chemical parameters. They then form a "stream team" of at least 3 people and select a stream to monitor. Water test kits are loaned out to stream teams who conduct one monitoring event each season and report their findings. The data is useful for: 1) indicating problem areas that need to be addresses or cleaned up (eg. Stream bank erosion, debris, spills...); and 2) showing long-range trends of how the stream changes from year to year.

The program is a collaborative effort of the Water Education Collaborative at the Rochester Museum and Science Center, Monroe County Health Department, New York State Department of Environmental Conservation, Eastman Kodak, and Nazareth College. To find out more or sign up for the program, please contact Margit Brazda ([margit\\_brazda@rmsc.org](mailto:margit_brazda@rmsc.org)) or Todd Stevenson at 274-7638 or e-mail: [tstevens@mc.rochester.lib.ny.us](mailto:tstevens@mc.rochester.lib.ny.us).



## Your Turn In The Spotlight

We would like to put together a presentation on Southern Rivers for the April general meeting. If you have slides, stories, or knowledge of any southern rivers and would like to participate, please contact Cathy Rague at (315) 926-7890 or [edncathy@rochester.rr.com](mailto:edncathy@rochester.rr.com)

## FLOW Organization

President .....	Mike Shafer .....	227-9291
Vice Presidents.....	Cathy Rague. (315) 926-7890	
	.....James Hopkins .....	621-2721
Secretary .....	Dorothy Caine .....	544-9725
Treasurer .....	Ed Boggs .....	(315) 926-7890
Facilities Development	Rick Williams.....	381-3418
Membership .....	James Hopkins .....	621-2721
Trips & Events .....	Ivan Rezanka.....	381-7475
Newsletter.....	Simon Barnett .....	899-6803
Education/Instruction	Ardie Shaffer.....	334-4487
Public Relations .....	Steve Kittelberger...	442-6138
Conservation/Access.	Jerry Hargrave.....	663-3888

## Newsletter Submissions

Send us trip reports, articles, letters to the editor, rants, photographs, ads for our classified section, or anything else that you would like to see in FLOWlines. Send items to [newsletter@flowpaddlers.org](mailto:newsletter@flowpaddlers.org). If you do not have e-mail, send items to:

Simon Barnett  
72 Maple Park Heights  
Rochester, NY 14625

## Membership / Address Changes

To join FLOW, download the membership form from the "How To Join" page on [www.flowpaddlers.org](http://www.flowpaddlers.org), fill it out and send it with \$30 (\$35 family rate) to:

FLOW Paddlers' Club C/O James "Hoppy" Hopkins  
43 Whelehan Drive  
Rochester, NY 14616

If you don't have access to the web, contact Hoppy at the above address, [hoppyski@yahoo.com](mailto:hoppyski@yahoo.com) or 621-2721. Send address changes to Hoppy too.

## FLOW Hot Line: 234-3893

To access the FLOW Hot Line:

1. Dial 234-3893 from a touch-tone phone.
2. To listen to messages left by other paddlers, press the remote access code any time during the greeting.  
After entering the remote access code, listen to instructions for how to access messages.
3. To leave a message for other paddlers, listen to the greeting and leave a brief message after the tone.

The FLOW hotline is sponsored by FLOW Paddlers' Club for FLOW members. The FLOW hotline is hosted by Bay Creek Paddling Center.

## Upcoming trips/events

Whitewater Trips: Contact Ivan Rezanka 381-7475.  
Flatwater Trips: Contact James Hopkins 621-2721.

## Paddling Contacts

### FLOW Corporate Sponsors

<i>BayCreek Paddling Center</i> .....	288-2830
Boat/gear sales & rental, instruction, kids camp 8% off stocked accessories <a href="http://www.BayCreek.com">www.BayCreek.com</a>	
<i>G.R.I.P.</i> .....	381-3418
ACA Certified whitewater instruction	
<i>Oak Orchard Canoe &amp; Kayak</i> .....	(800)-4-KAYAKS
1000 Boats, car & truck racks, parts, repair, ½ day river tours 10% off accessories; 22% off plastic WW boats (in stock only) <a href="http://www.oakorchardcanoe.com">www.oakorchardcanoe.com</a>	
<i>Snow Country</i> .....	586-6460
10% off paddling gear and accessories <a href="http://www.snowcountrysports.com">www.snowcountrysports.com</a>	

### Businesses Offering FLOW Discounts

<i>Colorado Kayak Supply</i> ( <a href="http://www.coloradokayak.com">www.coloradokayak.com</a> )	15% off accessories (Must Supply AWA Number)
<i>Nantahala Outdoor Center</i> ( <a href="http://www.noc.com">www.noc.com</a> )	10% off all goods
<i>Northern Outfitters</i> ( <a href="http://www.noh20.com">www.noh20.com</a> )	10% off all retail items
<i>Zoar Outdoor</i> ( <a href="http://www.zoaroutdoor.com">www.zoaroutdoor.com</a> )	10% off accessories and \$50 off boat prices

### Local Businesses & Instruction

<i>Adventure Calls</i> .....	(888) 270-2410
Whitewater rafting and boat shuttle in Letchworth State Park <a href="http://www.adventure-calls.com">www.adventure-calls.com</a>	
<i>Ardie Shaffer</i> .....	334-4487
ACA certified whitewater instruction & instructor training <a href="mailto:ardie@rochester.rr.com">ardie@rochester.rr.com</a>	
<i>Art Miller</i> .....	377-1994
ACA WW instruction & USACK certified WW slalom instruction <a href="mailto:ArtMiller@worldnet.att.net">ArtMiller@worldnet.att.net</a>	
<i>Hemlock Canoe Works</i> .....	367-3040
Hand crafted lightweight canoe manufacturer <a href="http://www.hemlockcanoe.com">www.hemlockcanoe.com</a>	
<i>Lock 32 Whitewater Park</i> .....	328-3960
Flat and moving water ACA certified instruction	
<i>Pack, Paddle, Ski</i> .....	346-5597
Flatwater, whitewater, canoe, kayak, & sea kayak instruction <a href="http://www.packpaddleski.com">www.packpaddleski.com</a>	
<i>Seayaker Outfitters</i> .....	(315) 524-9295
ACA certified Coastal Sea Kayak instructor / courses & tours <a href="http://www.seayaker.com">www.seayaker.com</a>	
<i>Talic Sport Hammocks</i> .....	271-3150
Wooden canoe and kayak stand manufacturer <a href="http://www.talic.com">www.talic.com</a>	

### Regional & National Organizations

<i>American Canoe Association</i> .....	<a href="http://www.acanet.org">www.acanet.org</a>
<i>American Whitewater</i> .....	<a href="http://www.americanwhitewater.org">www.americanwhitewater.org</a>
<i>Adirondack Mountain Club</i> .....	<a href="http://www.adk.org">www.adk.org</a>
<i>Genesee Waterways Center</i> .	<a href="http://www.geneseewaterways.com">www.geneseewaterways.com</a>

### River Gauges

<i>Genesee River (Letchworth)</i> .....	468-2303
<i>Catteragus Creek</i> .....	532-0626
<i>Black Cr. at Churchville</i> .....	(800) 452-1742 #361131
<i>Salmon River</i> .....	(800) 452-1742 #365123
<i>Waterline Site Codes</i> .....	<a href="http://www.h2oline.com">www.h2oline.com</a>

All phone numbers are in the 585 area code unless otherwise noted.

## Flat and Open-Water Trip List Organizer Needed

As you can see, Ivan has done some great work assembling a variety of whitewater river trips.

We need a volunteer to help organize our "Flat and Open-Water Trip-list". In past years we had great success with a series of mid-week paddles. On a Wednesday or Thursday night of each week we would gather on some one of Rochester's local venues, and break the stress of the workweek by spending a few hours on the water. The Barge Canal, Genesee River, Long Pond, Mendon Pond, Braddock Bay, Irondequoit Bay, and Lake Ontario were among the offerings. Many larger and weekend trips were talked up and became a reality, starting with conversations on these evenings.

Do you have a local place you would like to share? Interested in leading a short trip for a few hours one evening? Please help add to our list - if interested, contact Mike Shafer (mshafer@rochester.rr.com) or (585-227-9291) for more details.

### 2002 FLOW Whitewater Trip Schedule

Whitewater paddling, like all adventure sports, entails an element of risk. FLOW members assume this risk, and share the risk and responsibility for assisting others in need, as a condition of joining any of the listed trips below. Each participant will be asked to sign a release to this effect before putting onto the water. **We CAN NOT take non ACA/FLOW members on the trips.** To add trips, or change existing trip listings for the monthly update, call Ivan Rezanka, 381-7475.

Date	Level	Trip Description	Coordinator	Phone
March 13 (Wed. 5PM)	Beginner	Lower Oatka Creek, Class II	Steve Baker	585-334-5947
March 20 (Wed. 5PM)	Intermediate	Upper Oatka Creek, Class III	Steve Baker	585-334-5947
March 30	Intermediate	Cattaraugus Creek, Class III	Joel Chastek	716-344-4651
April 26 - May 5	Advanced	Southern trip. West Virginia to South Carolina. Rivers will be selected during the trip. Will include Cheat River Festival May 3-5. Class III & IV.	Mike Shafer	585-227-9291
April 3 (Wed. 5PM)	Beginner	Lower Oatka Creek, Class II	Steve Baker	585-334-5947
April 6	Intermediate	Fish Creek. Class III	Paul Houndt	585-341-3055
April 10 (Wed. 5PM)	Intermediate	Upper Oatka Creek, Class III	Steve Baker	585-334-5947
April 13	Beginner	Genesee River in Letchworth. Class II	Doug Roode	585-734-9026
April 17 (Wed. 5PM)	Beginner	Lower Oatka Creek, Class II	Steve Baker	585-334-5947
April 20	Beginner	Lower Oatka Creek, Class II	Steve Baker	585-334-5947
	Intermediate	Upper Oatka Creek, Class III	Kathy Corey	716-889-9351
May 4	Beginner	Genesee River in Letchworth. Class II	Bill Kuipers	585-322-7742
May 4	Intermediate	Cattaraugus Creek, Class III	Don Cochran	585-582-3142
May 11	Intermediate	Fish Creek. Class III	Doug & Dorothy Caine	585-544-9725
May 17-19	Advanced	Hudson River Gorge on Saturday, choose among Lower Moose River, Fish Creek, Black River, or Salmon River for Sunday. Class IV.	Vaughn Skinner	315-683-5379
May 25 - 27	Intermediate	Lower Youghiogheny River, Slippery Rock Creek. Class III.	TBD	
June 1	Beginner	Genesee River in Letchworth. Class II	Don Shaw	585-223-5077
June 4 (Tues.)	Intermediate	3-Wave or other feature on Black River. Class III	Mike Shafer	585-227-9291
June 8	Beginner	Genesee River in Letchworth. Class II	Dick Achter	315-986-2629
June 7-9	Beginner	Lehigh River, PA; with camping in nearby state park.	Steve Kittelberger	585-442-6138
June 8-9	Intermediate	Participate in 3 River Club clinic on Slippery Rock Creek. Class III	Tony Hernandez	328-9873
June 11 (Tues.)	Intermediate	3-Wave or other feature on Black River. Class III	Mike Shafer	585-227-9291
June 18 (Tues.)	Intermediate	3-Wave or other feature on Black River. Class III	Mike Shafer	585-227-9291
June 21-23	Advanced	Kipawa River Festival in Quebec. Add 1 day each for travel to and from. Class III-IV	Vaughn Skinner	315-683-5379
June 22	Intermediate	Salmon River, Pulaski, NY. A scheduled 400 cfs release. Class III	Richard Mauser	585-473-2162
June 25 (Tues.)	Intermediate	3-Wave or other feature on Black River. Class III	Mike Shafer	585-227-9291
June 29	Advanced	Black River, Watertown, NY. Class III - IV	Paul Houndt	585-341-3055
July 2 (Tues.)	Intermediate	3-Wave or other feature on Black River. Class III	Mike Shafer	585-227-9291

Date	Level	Trip Description	Coordinator	Phone
July 4 - 7	Intermediate/ Advanced	Ottawa River, Beachburg, Ontario. The annual gathering of FLOW paddlers to celebrate July 4 and Canada day. Class III - IV	Steve Benedict	315-331-5198
July 9 (Tues.)	Intermediate	3-Wave or other feature on Black River. Class III	Mike Shafer	585-227-9291
July 13	Intermediate	Salmon River, Pulaski, NY. A scheduled 750 cfs release. Class III	Bill Kuipers	585-322-7742
July 16 (Tues.)	Intermediate	3-Wave or other feature on Black River. Class III	Mike Shafer	585-227-9291
July 20	Beginner	Genesee River in Letchworth. Class II	Don Shaw	585-223-5077
July 23 (Tues.)	Intermediate	3-Wave or other feature on Black River. Class III	Mike Shafer	585-227-9291
July 26-28	Intermediate/ Advanced	Deerfield River, MA Dryway section Class III - IV	Steve Kittelberger	585-442-6138
July 27	Intermediate	Salmon River, Pulaski, NY. A scheduled 750 cfs release. Class III	Simon Barnett	585-899-6803
July 30 (Tues)	Intermediate	3-Wave or other feature on Black River. Class III	Mike Shafer	585-227-9291
Aug. 10	Intermediate	Salmon River, Pulaski, NY. A scheduled 750 cfs release. FLOW picnic Saturday Evening. Class III	Bill Kuipers	585-322-7742
Aug. 17	Advanced	Black River, Watertown, NY. Class III - IV	Paul Houndt	585-341-3055
August 22-25	Advanced	Gatineau River Festival, Maniwaki, Quebec on Friday and Saturday. Class IV. Preregistration is required. Ottawa River on Sunday	Vaughn Skinner	315-683-5379
Aug. 24	Beginner	Genesee River in Letchworth. Class II	Steve Baker	585-334-5947
Aug. 31	Advanced	Beaver River, Taylorville section, class IV	Ben Bramlage	518-792-3277
Sept. 7	Intermediate	Salmon River, Pulaski, NY. A scheduled 750 cfs release. Class III	Richard Mauser	585-473-2162
Sept. 7-14	Advanced	Southern trip. Ocoee River in Tennessee and other rivers in North Carolina. Class IV	Bill Kuipers	585-322-7742
Sept. 14	Beginner	Genesee River in Letchworth. Class II	Dave Meyer	716-367-2056
Sept. 20-22	Intermediate	West River, Vermont, Class III+	Ben Bramlage	518-792-3277
Oct. 5	Beginner	Genesee River in Letchworth. Class II	Doug & Dorothy Caine	585-544-9725
Oct. 19	Intermediate	Upper Moose River (from Singing Waters to Tannery) Class III	Dave Meyer	716-367-2056
Oct. 19, 20	Advanced	Lower Moose River (Moose Fest weekend). Class IV	Mike Shafer	585-227-9291
Nov. 2, 3	Intermediate	Tohickon Creek, PA Class III to III+. Camp nearby.	Steve Kittelberger	585-442-6138



Photos by Ed Boggs



## Boat Registration In Connecticut

Submitted By Jerry Hargrave

There were hearings in Connecticut on Tuesday to consider a bill that would require all canoes and kayaks used within the state to be registered! These registrations would be validated by the use of large numbers which would have to be affixed to your boat. This is similar to the way power boats are registered in most states. The bill, if approved would be effective July 1. We should expect diligent enforcement of this new law at such places such as Bulls Bridge and T'ville this summer!!

If you find this bill (HB-5164) unnecessary please contact Representative Jacqueline M. Cocco: jackie.cocco@po.state.ct.us Senator Biagio Ciotto: ciotto@senatedems.state.ct.us, Robert Heagney robert.heagney@housegop.state.ct.us and Demetrios Giannaros demetrios.giannaros@po.state.ct.us immediately.

It would be wise to let them know how important each of us is to the local economy and how easily we can paddle in another state! With enough contact from all of us this bill could die!



Try before you buy at our Canandaigua Store!

Whitewater and Touring Kayaks & Accessories. We're More Than Just Skiing!



harmony



SEAL LINE



CASCAD DESIGNS



NECKY KAYAKS



Kokatat

Canandaigua  
716-398-2300

Pittsford  
716-586-6460

www.SnowCountrySports.com

## Another Paddling Link

Here's a link that you may want to check out - Upload boats, gear, paddles with photos so when a buyer searches your area they will find your gear. It is a great place for first time boaters to find their first whitewater kayak. It is a free site and although it looks really basic - it has great functionality.  
<http://www.kayaklink.com>

## FLOW Steering Committee Meeting Minutes, February, 2002

- I. Winter Party Recap
  - A. Party well attended - approx 45 members. Should consider same location for next year. Member feedback welcome to Mike Shafer.
- II. Constitution Vote Results
  - A. Voted in by 79%
  - B. Steering committee to plan implementation at March steering Meeting
- III. GWC Integration
  - A. Varied opinion scored from survey box at January party.
  - B. 45% positive; 27% negative; 27% undecided
  - C. More open discussion with general membership needed.
- IV. Newsletter
  - A. March newsletter last to go to non-renewed.
  - B. Deadline for March news contributions is February 21.
  - C. Free FLOW stickers to early renewals should go with March newsletter.
- V. Web Page
  - A. *Your\_name@FLOWPaddlers.org* e-mail addresses now available  
Tool to be used for open contacts via web page and newsletter (officers, information, etc.)
- VI. Trip lists
  - A. Whitewater trip list: destinations and coordinators planning
  - B. Need volunteer for flat/open water trip list coordinator.
- VII. Upcoming Meetings & Activities
  - A. March 14  
Genesee Waterways Center Open House
  - B. April  
Southern Rivers Presentations? Seeking participants.
  - C. May - open
  - D. Swap meet - will not be held in March this year. Possible during June outdoor Meeting at Mendon Ponds.

**Next Steering Committee Meeting - March 7, Barnes & Noble Café - Pittsford, 7pm.**



## An Open Letter To The Members Of FLOW

Submitted by Kevin Kretschmer, President, Adventure Calls Outfitters, Inc.

I just finished reading through the latest issue of FLOW lines [February 2002] and felt compelled to respond to the reprint of the letter sent to Rich Parker pertaining to the Letchworth High Water Evaluation. I am sure there will be those who will contend my views are somehow self-serving, and therefore biased. That is not the case. I stand to neither gain nor lose by having restrictions placed on hard boaters in the park. However, my observations are sought by the park administration and I differ with some of the points raised.

To begin with, I would like to address a couple of inaccuracies. The put in as described is not "Lee's Landing". Although the access trail used to get to the river does indeed go to Lee's Landing, when kayakers (or rafters) turn right at the bottom of the hill and walk upstream to the river, they are launching just above "Entrance Rapids" and immediately downstream of "Warm Up Rapids". When paddling "The Loop", you come off the river at Lee's Landing, or what most hard-boaters refer to as "lunch stop". It is important that everyone paddling the river use the same reference points. Should there be a mishap, there cannot be any confusion among all the parties involved as to where the incident is when initiating a search or rescue operation. A large, detailed map of the river is located in the South Pool House. It was designed jointly by the park and members of the paddling community. Every rapid has been numbered and labeled. Secondly, there is mention of the need for a large sign, visible from the river, indicating the takeout at St. Helena. There is presently a large red and white "St. Helena" sign prominently displayed at the top of the gorge wall on river left at the Upper St. Helena picnic area. It is visible from at least a half mile upstream of the takeout. It was installed two years ago following a search for some lost canoeists. A sign at the river's edge at St. Helena is impractical given the fluctuating levels of water being held behind the dam. However, the large red and blue

bus and/or truck with raft trailer attached are usually a pretty good indicator you've reached the takeout.

Having paddled this river since 1983 in both whitewater canoes and rafts at a variety of levels (up to 19.5 on the Portageville Gauge), I believe I can speak from experience and with sound judgement on the actual inherent risks at various levels. At 15.6, there are several problems that were not mentioned when paddling the section of the river from "Entrance" through "Red Ball". Paddlers using the right channel around the island are blindly approaching any potential strainers behind the island. These strainers are most likely to come off the bank on river right if there has been a prolonged heavy rain, but can come from the island on river left as well. It is not uncommon for a large hydraulic to be present in the corner at the Southern tip of the island, caused by water from far river right (flowing under the Heron Rookery) merging with the "normal" right channel. Also, the compression waves in the right channel behind the island, upstream of where the left branch of the island comes in, have a tendency to begin exploding at 13+. Having flipped several rafts in this section, the left channel is recommended.

In reference to the statement pertaining to the small island with young trees on it "in the vicinity of Wolf Creek", and the idea that only unguided rafts are at risk, I must assume you are describing "Mystery Rock Rapids". The trees are so small, most are less than an inch in diameter, they have never been viewed as a threat. Furthermore, if the river is 13.0 or higher, it is Adventure Calls policy for guides to accompany each raft on a river trip to eliminate unguided rafts from encountering any dangers.

Unmentioned at all in the letter is, in my opinion, the singular largest problem of paddling at this level. When the river is above 14, it becomes very pushy and flushes through in most places, particularly at St. Helena. When approaching the primary takeout, it is imperative any craft be well river left before passing the corner prior to St. Helena. At this level, your choices are; risk circulating around in a large eddy pool several times before landing or, be in the center or right channels and miss the takeout all together. It will be in this area that all the debris you have paddled around during the day will become a problem. It can make reaching shore safely a precarious situation since it tends to roll around between the main channel and the extremely strong eddy currents. Missing the primary takeout at this levels requires finding shore wherever possible and bushwacking back to the access road or hoping to use the secondary takeout at the bridge remnants. The bridge takeout offers no respite from the strong



PADDLING CENTER

BayCreek Paddling Center  
1099 Empire Blvd  
Rochester NY  
(585) 288-2830  
<http://www.baycreek.com>

**The NEW 2002 Wave Sport boats are here.**

See the Ace Series, the Siren, the Super EZ and the Mutant.  
All have the new F.A.T. 2.0 Outfitting.

**All 2001 and older boats 25% and more off**  
(Flat and White Water)

currents and the drop off is quite steep should there be a misstep.

The largest concern I, along with many others share in "freeing" this river is because of where it is situated. Adventure Calls operates on two rivers that are "free", the Cattaraugus and the Salmon. Anyone who cares to, can hop in a boat and paddle at their own risk no matter what the levels are. Because of their nature and location, it is quite unlikely that John Q. Public will borrow a boat from a friend and put themselves at risk. It does happen however, and in the last five years, there have been three fatalities on the Cattaraugus alone. Since the Genesee River is in a state park that is accessible to all, larger numbers of people are buying, renting, or borrowing boats and paddling the river at levels far exceeding their abilities. What is most disconcerting to those of us on the river almost everyday is that this is becoming a fairly common practice. Not only are mom, dad, and the kids taking canoes out in water where they have no business being, but "gen-xer's are getting their hands on the most radical kayak they can find, coming to the park, and playing with their new "toy".

I would agree there are some paddlers who could competently run the Genesee River within the park at almost any level. The question is, who are those people and how is that determination made? The park staff at the Visitor Center readily admits they are in no position to judge the ability of the person standing before them with their permit. Also, at what level must even the most proficient radical boater admit the river is too high to safely paddle? If 15.6 is ok, why not 19.0? (the cut off for rafting and a level we have never considered raising.) How about 24.0? (I've got video footage of the sluice and water is going over the stone bridge.)

As I mentioned in my opening statement, Adventure Calls is unaffected either way in this argument. We can choose to disagree on the subject and the rafting staff will still provided shuttle service for you and your boats to the top of the hill after a day of playing on the water. I only ask everyone use some common sense before climbing into their boat and heading downstream. Your contention may be that it is your right to paddle wherever and whenever you choose. Often however, when people are arguing for their rights they are forgetting that with rights come responsibilities.

Peace Be With You,  
Kevin Kretschmer



## The Route 3 Wave Controversy

*Submitted by Steve Kittelberger*

During January, Rochester paddlers began to realize that a controversy was brewing in Watertown, centered on one of our favorite park-and-play spots, the play wave on the Black River at Route 3. I have investigated, and this is my report.

Watertown developers Tom Reilly and Sara Daniels are promoting the enhancement of the Route 3 Wave to a world-class wave-hole suitable for international competition. They have retained EJ...Eric Jackson...as a consultant, and hope to host the 2005 World Kayaking Federation rodeo competition. Reilly and Daniels have purchased adjacent land, and plan to build an amphitheatre, cabins and other money-making facilities. The designer is EJ's partner and hull designer, Dave Knight. Knight is an experienced boat designer, but has participated in only one whitewater playspot improvement project.

The City of Watertown owns and operates the hydropower dams along the Black in Watertown. By the terms of the FERC relicences of 1997, they must contribute \$10,000 a year to local recreation, and \$40,000 is in escrow for this purpose. In addition, Watertown owns land near the site, and would need to grant a right-of-way to enable the site development. The developers have asked the City to support the project, and to contribute money.

The application for 2005 Worlds, complete with \$5000 fee, is due this spring. However, Knight has yet to visit the site, receive any topographic survey data on the site, or to begin any serious modeling to determine what can realistically be achieved. In Knight's own words the project is "at the feasibility stage."

The project began to come to the attention of the paddling world outside Watertown in late December with postings on BoaterTalk and Northeast Paddlers' Message Board. There has been a flood of responses, the majority opinion being "Don't tinker with the Wave...build the rodeo hole somewhere else." There are just enough alternative proposals being floated to confuse the paddling community as to exactly where the rodeo hole is planned. American Whitewater, as a result, will not take a position on the project until they know more.

A public meeting is being held Tuesday, February 26 by the developers. Called at the last minute, this meeting will be difficult for many northeastern paddlers to attend. Based on the outcome of this meeting, a follow-up meeting may be needed. I have initiated discussion with AW of a possible follow-up in late April.

Mail your opinions to Watertown Mayor Joe Butler at [jbutler@watertown-ny.com](mailto:jbutler@watertown-ny.com), and follow the public debate on BoaterTalk, NPMB and our own FLOW message board.

## Classified Ads / Lost & Found

I need four Y-30 clips to attach a Yakima rack to a gutterless, aero-style roof on a 4-door 1992 Honda Accord LX. If you have some, please call Emily at (585) 346-5597 or email her at epleger@hotmail.com.

**Perception Mr. Clean** play boat and **RIOT KIX** creek boat 450.00 each. Contact Jim at (585) 436-9902 or (585) 370-9585 cell.

Violet **Perception Dancer-XS** for persons 120 lbs. or less. Great for kids! Includes airbags and sprayskirt \$350. Yellow **Perception Dancer**, includes airbags, sprayskirt and paddle \$350. Call Pam (585) 785-0515.

White **Perception Mirage** with flotation, medium ExtraSport PFD., skirt, and Mohawk paddle. Very retro. \$300 Don Valerio donval@frontiernet.net (585) 526-5561

For Sale: **Dagger Centrifuge**: Color — Blue marble and some other things happening in there. Purpose — River running playboat, great for surfing, flat spins and vertical moves. Very loose hull. 52 gallons, used a dozen times \$450. Call Rob 315-3000.

**Large Float Bag** for sale - EPI 21" x 37". **Wanted:** Large spray skirt. Willing to pay squat. Call me, we'll do business. Richard (585) 473-2162.

Purple and white **New Wave Cruise Control** for sale \$250 OBO. Contact Simon at (585) 899-6803 or barnett@bluefrognet.net.

**Riot Slice** \$325, 1½ years old, Super Surfer, Carves and Squirts like the devil. A great price to try an awesome hard chined playboat. **Thule Model 1050/33** Ski Racks (Mount on Thule Cross bars), 2 sets, each holds 3 pairs of skis. \$12 per set. Call Doug at 734-9026.

Orange **Wavesport Forplay** \$550. Well outfitted and bumped out for big feet and comfort. Call Rick Williams at (585) 381-3418.

Nice **RPM** for sale \$400.00. As always my boats come with good karma at no extra charge. e-mail Dave Meyers at wwrpm5@aol.com.

For Sale: great condition **Dagger Ultrafuge**, blue and black, Bomber backband, \$490 Contact Randy French at Scodese@juno.com.

**Whitewater Kayak Instruction**

**Rob Blake**  
(585) 315-3000

**Rick Williams**  
(585) 381-3418

ACA Certified Instructors All Levels  
Private and Group Lessons  
Custom Programs

**GRAVITY RESEARCH INSTRUCTION PERFORMANCE**

## 800 CANOES - KAYAKS!

A Unique Shopping Experience - Knowledgeable Staff!

MEMBERSHIP HAS IT'S REWARDS! 22% FLOW DISCOUNT on any in stock  
DAGGER - PERCEPTION-PYRANA-NECKY POLY  
10% on any reg. accessory, etc.

**WeNoNah** - the finest canoe in the world  
**Old Town** - #1 seller in world  
**Dagger** - Canoe and Kayak  
**Necky** - Our best selling Kayak  
**Hobie & Ocean Kayak** - Sit on tops  
**Nova Craft, Radisson** - Bell

TRY BEFORE YOU BUY!

**RIVER FLOAT TRIPS**  
Large & small groups - All summer, clean, moving water in Orleans Co.)  
**DO-IT-YOURSELF** \$20.  
with SHUTTLE \$39.  
Reservations Necessary

**www.oakorchardcanoe.com - or - 682-4849**

### Oak Orchard Canoe Kayak Experts

PICKUP TRUCK REAR RACKS  
1 Styles, Tonnes Compatible, also a 2" Receiver **139<sup>U</sup>**

**PITTSFORD**  
**586-5990**  
**1-800-4KAYAKS**

10% on Complete Rack System

**FLOW Paddlers Club**  
43 Whelehan Drive  
Rochester, NY 14616

